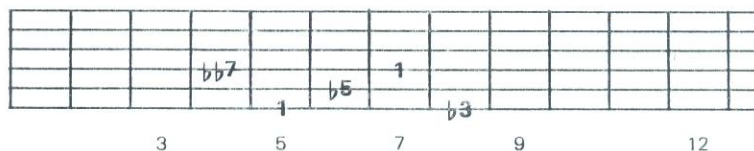


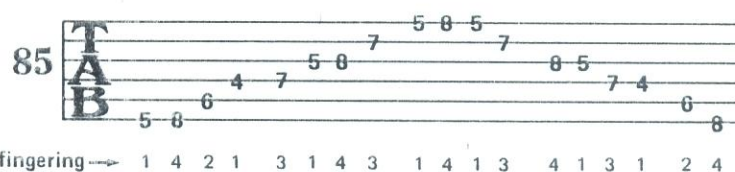
DIMINISHED 7TH ARPEGGIOS 22

The notes of a *diminished 7th* chord or arpeggio are each equally spaced, a minor third apart. This “stack of minor thirds” gives a very dark, unsettled quality. (I think of diminished chords as being “excessively” minor!) The tones of the diminished 7th are 1, $\flat 3$, $\flat 5$, $\flat \flat 7$ —a *double-flatted* seventh gives the same pitch as 6.

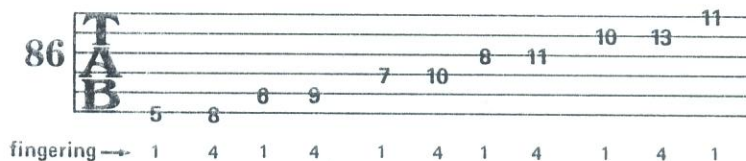
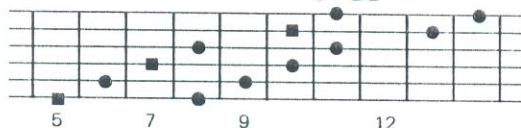


Listen to the unusual quality of the diminished 7ths below.

A dim. 7th arpeggio



A dim. 7th arpeggio



The following licks incorporate the diminished 7th arpeggio. This pattern blends nicely with the Dorian/blues *hybrid* (or, combined) scale—1, 2, $\flat 3$, 4, $\flat 5$, 5, 6, $\flat 7$ —since each of the pitches of the diminished 7th are found within it. Examples 87 and 88 demonstrate this. As you play each lick, visualize the blues/dorian pattern superimposed together with the diminished 7th. Example 89 applies an ascending sequence to the arpeggio.

